

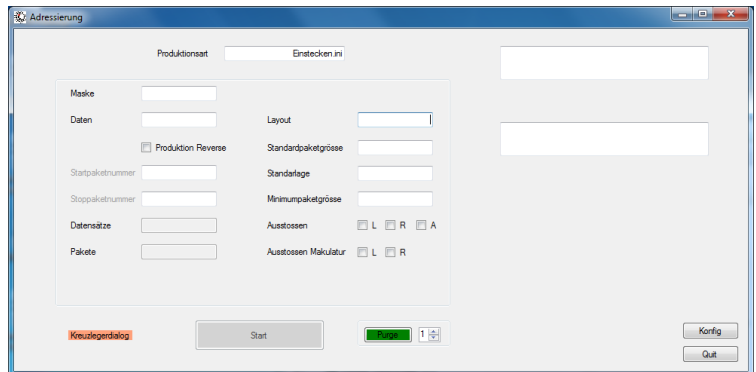
BIG-JET 2000 MAIL addresses and controls bundle-forming units

With BIG-JET 2000 MAIL, you trust on Hewlett Packard's world-renowned thermal inkjet technology. It is maintenance-free, reliable and cost-effective and offers the print quality of an office printer.

- BIG-JET 2000 MAIL prints variable data, data matrix, QR codes and post codes
- Full integration within automatic processing lines such as from Ferag, Muller Martini, Siemens
- Control of downstream processes such as stacker, points or label printers



Printing bottom-up



Front-end application

Simple and intuitive interface – in-line and off-line addressing made easy

Addressing:

The addressing system imports the address data, the bundle related settings and the layout to be used from an operator-selected Excel spreadsheet. The data are processed in ascending order. Partial production and reproduction are possible at bundle / address level.

Bundle:

Due to the imported or adapted specifications for the bundle, layer and minimum size, the bundles are split into layers. The stacker (layer and bundle separation) is controlled by the serial interface or hardware signal. For this purpose, a copy tracking over the entire distance from the label to the separator in the stacker is installed. If required, these lengths can be adjusted via a mask.

Use at different addressing positions:

Put your BIG-JET 2000 MAIL where you need it. The various configurations are parameterized and can be called up in a selection mask.

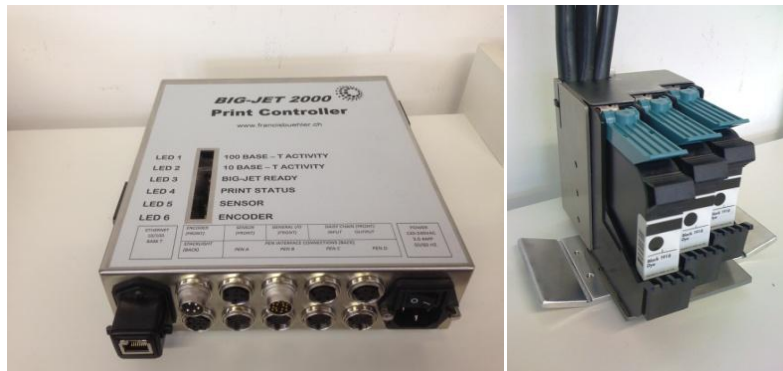
- Integration into existing systems thanks to tailor-made front-end applications
- The clean alternative to CIJ printers
- From in-line installation to off-line applications within shortest time

Technical data	BIG-JET 2000 MAIL
Print head	Standard HP TIJ 2.5 cartridge with print height 12.7 mm, 1-64 print heads in individual position or grouped as requested
Speed:	up to 150m/min.
Resolution:	75 / 150 / 300 / 450 / 600 dpi
Print length	up to 1000 mm, endless printing with automated switch of cartridges
Layouts:	large templates will be printed by multiple print heads
Hardware:	Modular print controller with a connection to external PC and screen for integration into production line or network
inks:	single cartridge Bulk Ink Supply various colours and qualities, water based and solvent based security ink
outputs	Ink management, alarm, external control signal for downstream process
interfaces	Ethernet, TCP/IP protocol, RS 232, RS 422, High Speed serial
voltage	240/110V / 50/60 Hz

Modular set-up with print controller and PC



All-in-one PC



BIG-JET 2000 MAIL Controller and print heads